

BUILDING NO. 5.

BUILDING NAME: SHORELAND HOTEL

LOCATION: 5450-5484 South Shore Drive CITY: Chicago,

COUNTY: Cook STATE: Illinois ZIP: _____

OWNER: University of Chicago

ADDRESS: 5801 South Ellis Avenue CITY: Chicago,

STATE: Illinois ZIP: _____

LOCATION OF LEGAL DESCRIPTION: Cook County Recorder of Deeds
118 N. Clark Street, Chicago, IL

VERBAL BOUNDARY DESCRIPTION: Located on the west side of South Shore Drive between East 54th and East 55th Streets. (continued below)

APPROXIMATE ACREAGE: 1.56 DATE OF CONSTRUCTION: 1925-1926

ARCHITECT AND/OR BUILDER Friedstein & Co., Architects; Jackson Hotel Company,
DESCRIPTION: Developers

The "U" shaped eleven story Shoreland Hotel is built of buff brick over a terra cotta base. Impressive in size, it has a 300' frontage on South Shore Drive facing the Lake and is 200' deep. While the design approach is neo-classical with an arcaded base terminating in a classically inspired cornice and balustrade across the front of the central section terrace, the terra cotta detailing displays medieval and baroque touches, including heraldic shields, eagles, keystones with satyr heads, and other fanciful products of the terra cotta maker's art. The building's two end wings are crowned by terra cotta arcades framing the 11th story windows, crenulated terra cotta cornices, and attic stories with baroque center sections that project above the coping.

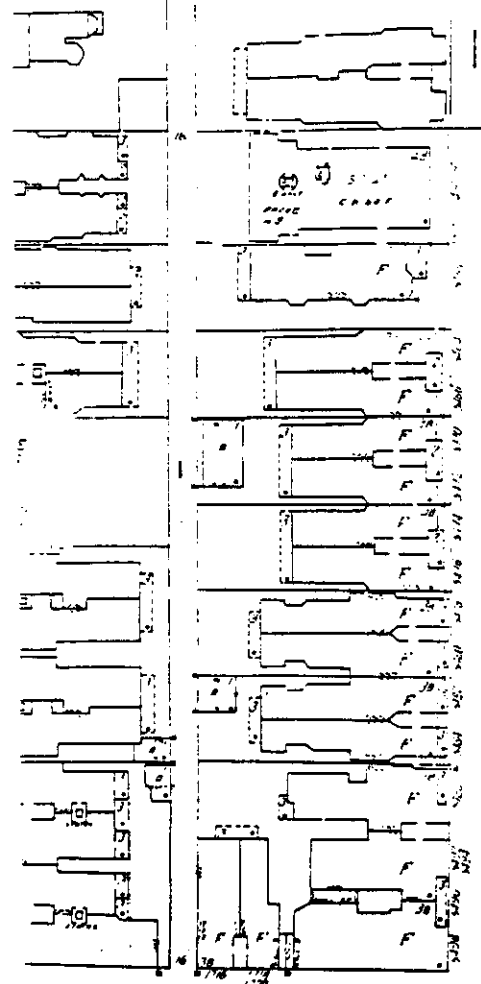
The building is entered via a brick paved circular drive that passes under a cast iron porte cochere with cresting. The massive two story, columned lobby has a marble floor and wainscoting. The building is presently used by the University of Chicago as a dormitory. It is one of the largest of the Hyde Park Apartment Hotels with 313 apartments.

SIGNIFICANCE:

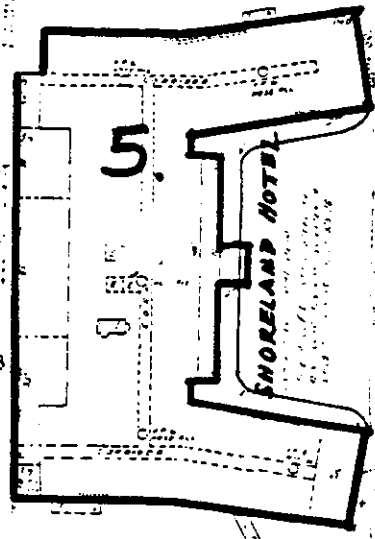
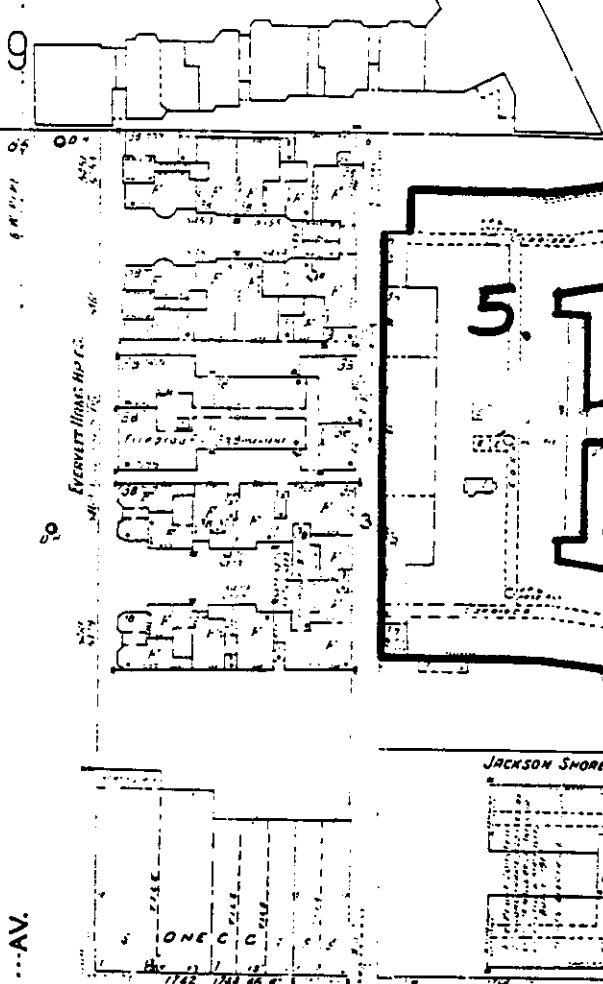
While the Shoreland is one of the largest of the Hyde Park Apartment Hotels, it is significant for the high quality of its overall design, its impressive entry via a circular drive and cast iron cochere, and the architect's success in scaling down, and providing rich eye appeal to, its monumental, neoclassical two story first level with a wide array of baroque terra cotta ornamentation as described above. In so doing, the designer provokes thoughts of a grand country manor without calling attention to the building's height. However, the building also displays ornamentation at its upper levels and massing that make the building a "stand out" when viewed from a distance along South Shore Drive.

VERBAL BOUNDARY DESCRIPTION: Beginning at a point 170 feet North and 33 feet West of a point at the center of E. 55th Street and South Shore Drive, take a line west 205 feet, then north 310 feet, then east 205 feet, than south 310 feet connecting to original point.

110
(108-109)



109

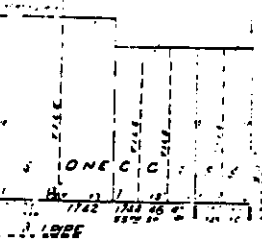


5

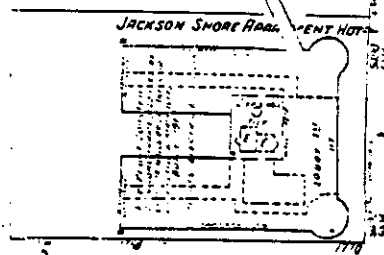
SHORELAND HOTEL

SOUTH SHORE DRIVE

AV.



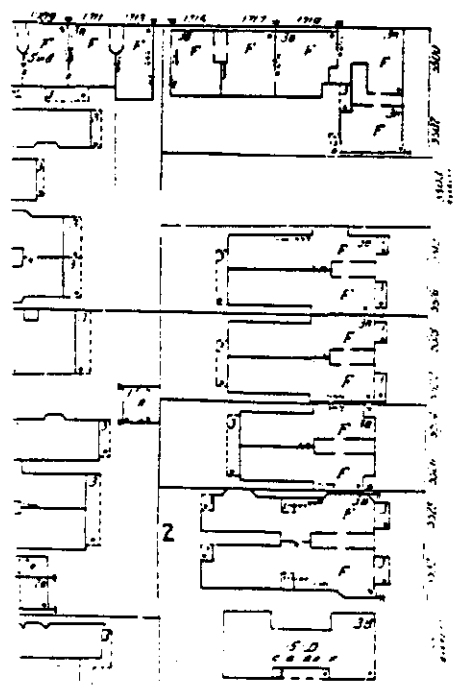
ONE C. L. LEE



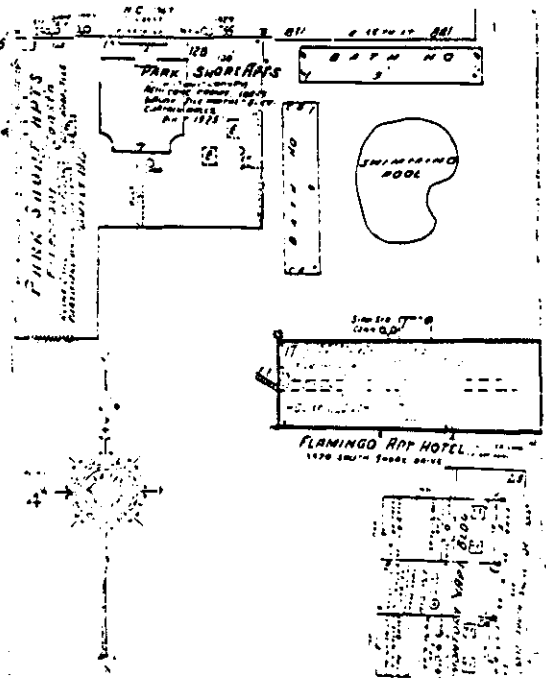
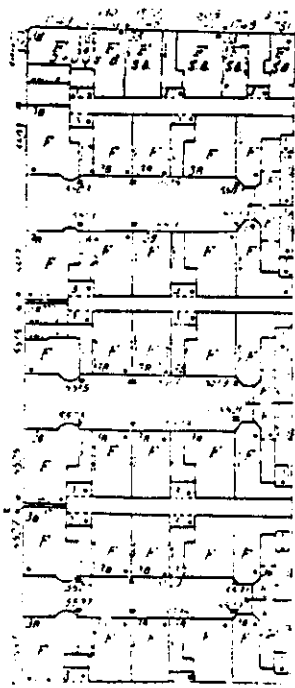
JACKSON SHORE APARTMENT HOTEL

E. 55TH ST.

ST.



EVERETT



PARK SHORE APARTMENTS

SWIMMING POOL

FLAMINGO APART HOTEL



IN REPLY REFER TO:

United States Department of the Interior

NATIONAL PARK SERVICE
P.O. BOX 37127
WASHINGTON, D.C. 20013-7127

RECEIVED

JUN 6 1986

HISTORIC PRESERVATION

MAY 23 1986

The Director of the National Park Service is pleased to inform you that the following properties have been entered in the National Register of Historic Places beginning May 11, 1986 and ending May 17, 1986. For further information call (202) 343-9552.

STATE, County, Vicinity, Property, Address, (Date Listed)

ALABAMA, Calhoun County, Jacksonville, Downtown Jacksonville Historic District, Roughly bounded by College, Thomas, Coffee, and Spring Sts. (05/13/86)

ALABAMA, Limestone County, Athens, Houston, Governor George Smith, House, 101 N. Houston St. (05/15/86)

ALABAMA, Mobile County, Mobile, Paterson House, 1673 Government St. (05/15/86)

ALABAMA, Tuscaloosa County, Tuscaloosa, Downtown Tuscaloosa Historic District, Roughly bounded by Fourth St., Twenty-second Ave., Seventh St., and Twenty-fifth Ave. (05/15/86)

ARIZONA, Coconino County, Grand Canyon vicinity, Trans-Canyon Telephone Line, Grand Canyon National Park, Grand Canyon along Bright Angel and North Kaibab Trails from South Rim to Roaring Springs and South Kaibab Trail to Tipoff (05/13/86)

HAWAII, Hawaii County, Bobcat Trail Habitation Cave (50-10-30-5004) (05/15/86)

ILLINOIS, Cook County, Barrington, Barrington Historic District, Roughly bounded by Dundee, W. Coolidge, E. Hillside, and S. Grove Aves., and S. Hough, E. Lake, Main, N. Garfield, and E. Applebee Sts. (also in Lake County) (05/16/86)

ILLINOIS, Cook County, Chicago, Chicago Beach Hotel (Hyde Park Apartment Hotels TR), 5100-5110 S. Cornell Ave. (05/14/86)

ILLINOIS, Cook County, Chicago, East Park Towers (Hyde Park Apartment Hotels TR), 5236-5252 S. Hyde Park Blvd. (05/14/86)

ILLINOIS, Cook County, Chicago, Flamingo-On-The-Lake Apartments (Hyde Park Apartment Hotels TR), 5500-5520 S. Shore Dr. (05/14/86)

ILLINOIS, Cook County, Chicago, Hotel Del Prado (Hyde Park Apartment Hotels TR), 5307 S. Hyde Park Blvd. (05/14/86)

ILLINOIS, Cook County, Chicago, Hyde Park-Kenwood Historic District (Boundary Increase), 825-833 E. Fifty-second St. (05/16/86)

ILLINOIS, Cook County, Chicago, Lakeview Historic District (Boundary Increase), 701, 705, 711, 715-717, 721, 733-735, 737, and 739 Belmont, 3162 & 3164 Orchard and 3171 Halsted (05/16/86)

ILLINOIS, Cook County, Chicago, Mayfair Apartments (Hyde Park Apartment Hotels TR), 1650-1666 E. Fifty-sixth St. (05/14/86)

ILLINOIS, Cook County, Chicago, Poinsetta Apartments (Hyde Park Apartment Hotels TR), 5528 S. Hyde Park Blvd. (05/14/86)

ILLINOIS, Cook County, Chicago, Shoreland Hotel (Hyde Park Apartment Hotels TR), 5450-5484 S. Shore Dr. (05/14/86)

ILLINOIS, Vermilion County, Danville, Stone Arch Bridge, 760-800 E. Main St. (05/16/86)

KENTUCKY, Campbell County, Fort Thomas, Fort Thomas Military Reservation District, Roughly bounded by Pearson, Alexander, and Cochran Aves., River Rd., and S. Fort Thomas Ave. (05/15/86)